

# **THE CULTURAL LANDSCAPE**

# GUIDING QUESTION:

*How have people shaped the land?*

(which of the 5 themes are we dealing with here?)



# CULTURAL LANDSCAPES

Landscapes that have been  
changed by human societies

We are ALL participants

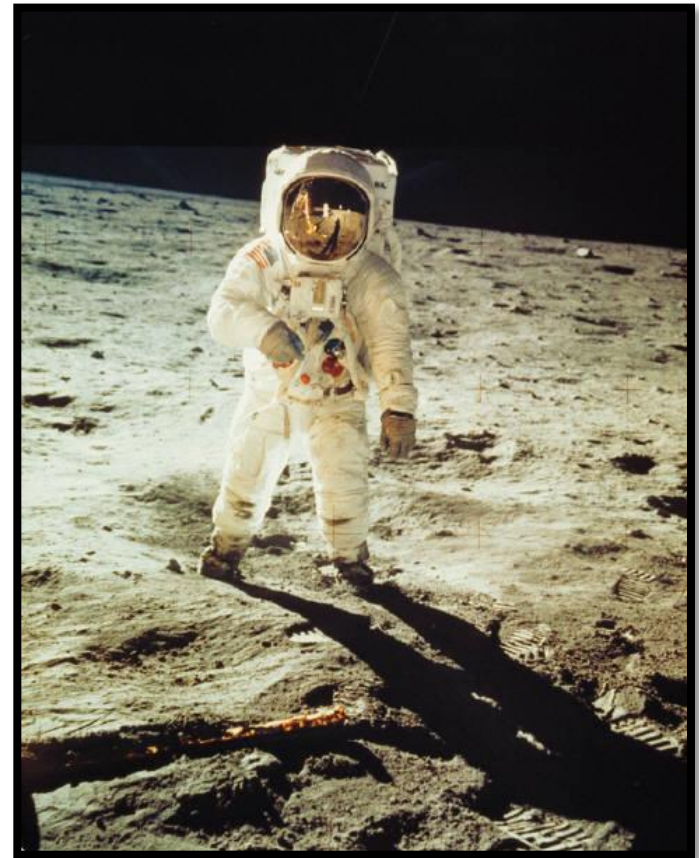
What's your mark?



# CULTURAL LANDSCAPES:

“the **VISIBLE** results of human activity”

What have you done today that has **NOT** left a visible result of your existence?



# THE IMPACT OF THE MARK...

We all contribute to cultural landscape... some more than others.

How might culture and attitudes influence how we view and use the land?

Why might this cause conflict?

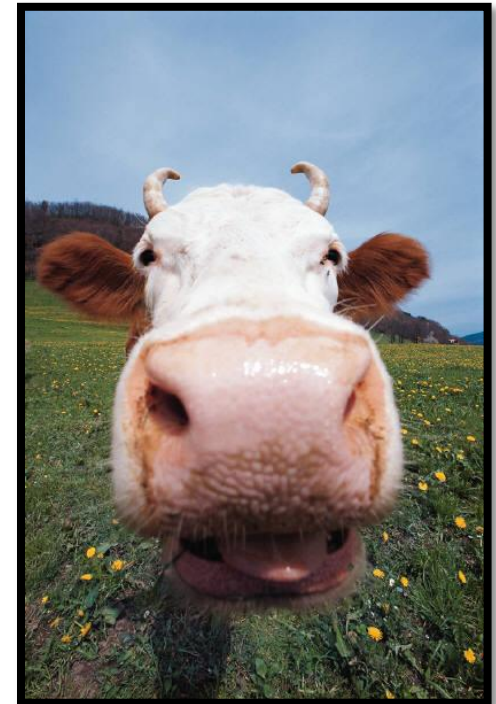


# **CULTURAL LANDSCAPE: SETTLEMENT & POPULATION**

**One MAJOR way we contribute to cultural landscape is via settlement.**

**In Canada, settlement was largely limited to the southeastern regions until the 20<sup>th</sup> Century**

**WHY DO YOU THINK THIS IS?**



# **CULTURAL LANDSCAPE: SETTLEMENT & POPULATION**

**Deciding where to settle largely depends on three important factors:**

- 1. Physical environment**
- 2. Climate**
- 3. Economic Possibilities**



# LONG-TERM SETTLEMENT



Depends largely on landforms and climate:

A combo of flat land + mild winters + adequate rain + good soil = some factors that draw settlers.

*Does the Lower Mainland exhibit these qualities?*



# **SHORT-TERM SETTLEMENT...**

**Made possible by the promise  
of work**

**People will deal with a poor  
climate and less desirable land  
for a good income.**

**THINK! Where do Canadians  
do this right now?**

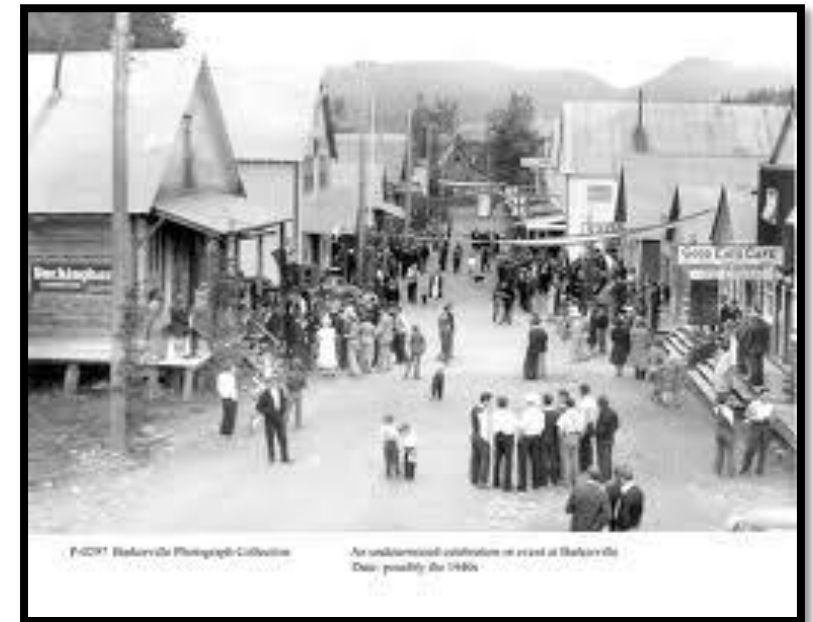


# BOOM & BUST!

Many resource towns in Canada experience cycles of boom and bust.

**BOOM** = a flourishing, or “BOOMING” economy (healthy)

**BUST** = a failing economy (no money, no jobs)



# CULTURAL LANDSCAPE: BOUNDARIES

Alongside settlement, another major way we contribute to cultural landscape is through creating **artificial** boundaries.

What is an *artificial* boundary? What is a *natural* boundary? How might artificial boundaries cause problems?

Turn to page **37** in your text 😊



# **REFLECTING: WE SHAPE THE LAND AND THE LAND SHAPES US...**

**Using the graphic organizer provided, do assignment #1 parts A and B on page 39.**

**Read the directions CAREFULLY for understanding. WHAT are you being asked?**

**Do one side for part A**

**Do one side for part B**